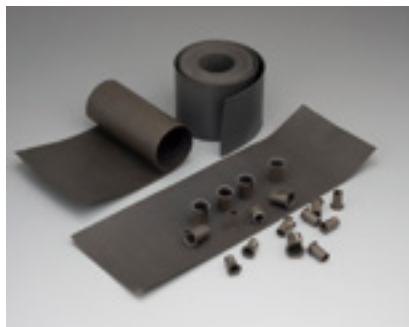
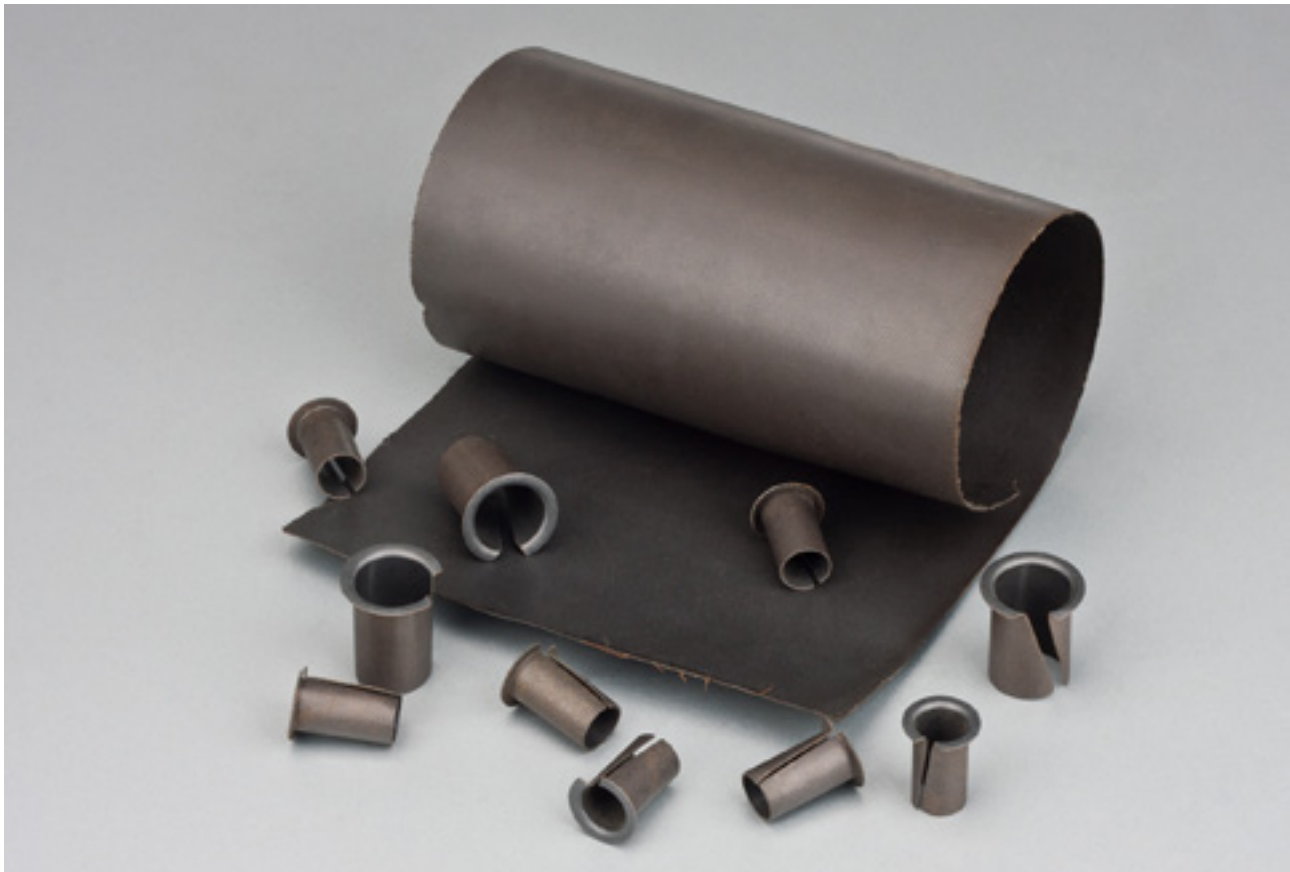


QM-FR Bronze Mesh with PTFE Bushings



MQ-FR Bronze Mesh with PTFE Bushings

MQ-FR(FR) soft strip material consists of a bronze mesh shell, laminated with compounded PTFE tape.

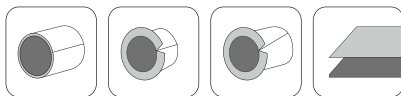
It is widely used in car door hinges, joint bearings, medical industries, food industries, textile machines etc. The standard wall thickness is 0.48±0.02 mm.



Product Benefits

- 1.able to work stably in without oil lubrication state.;
- 2, suitable for low-speed reciprocating motion, swing and intermittent movement, etc.;
- 3.good anti-wear;
- 4.good corrosion resistance.

Available type

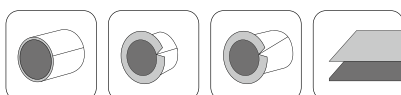


Application case



Automobile door and window hinge, textile machinery, joint bearing, chemical industry, food industry, valve control mechanism, office machinery, instrument and so on, light load low speed but need to lubricate different occasions

Availability



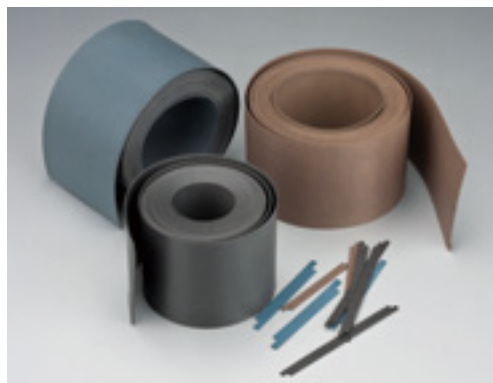
Technical Parameters

Metal Bushing Capacity	Thickness
Bronze	0.48 ±0.02
Copper	0.48 ±0.02
Stainless steel	0.48 ±0.02

*Different thickness is available while big demand!

Max.Loading	Temp.limit	Max. Speed		Max.PV limit	Friction Coefficient μ
		Dry	Oil		
30N/mm ²	-20°C~+250°C	0.5m/s	2m/s	1.65/mm ² ·m/s	0.05~0.20

MQ-FD Soft Strip with Copper Lubricants



FD Soft strip is composed of PTFE and bronze powder, it is fabricated by using mould to press and then sinter. It has the advantage of lower friction and lower wear and powerful tensile strength.

FD can be used with oil or without oil, so it is the best choice for machine tool slide guide, automobile absorber, piston ring, and so on.

Tensile strength	Temp.limit	Temp.limit	Friction Coefficient μ
22N/mm ²	1.5m/s	-100°C~250°C	0.09~0.2